

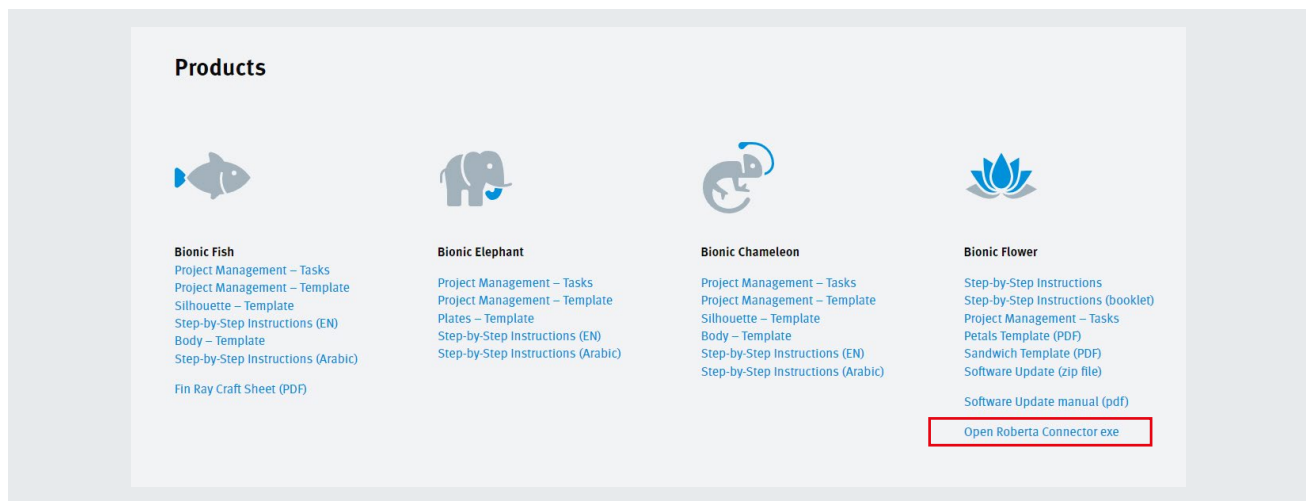
How to use the Open Roberta Lab

Example: Bionic Flower

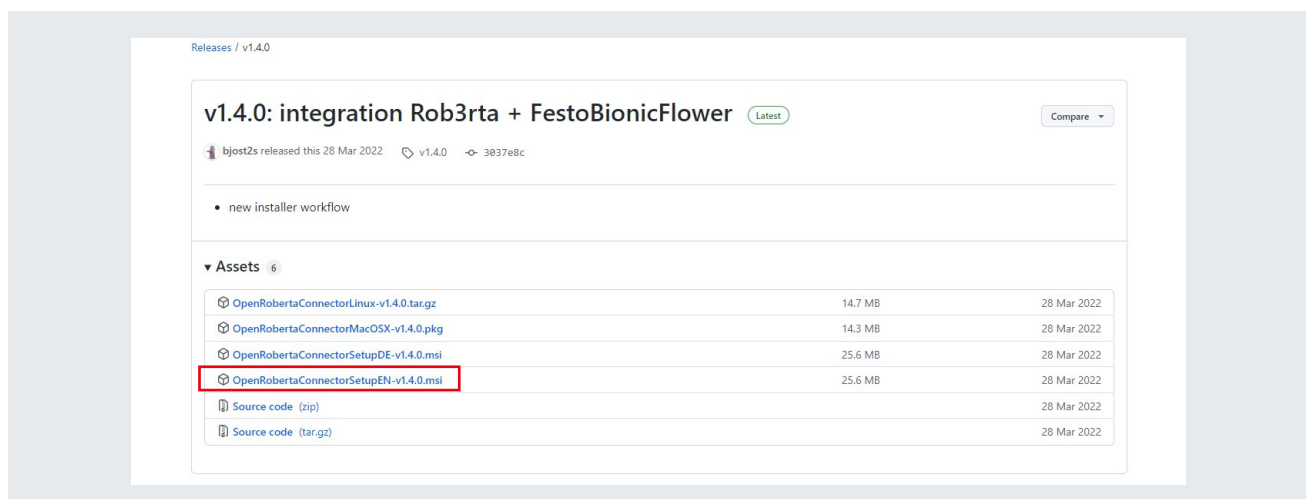
Step 1: Install Open Roberta Connector

- Go to Bionics4Education: <https://www.bionics4education.com/support>
- Go to GitHub: <https://github.com/OpenRoberta/openroberta-connector/releases/tag/v1.4.0>
- Download and install the following file:

Bionics4Education

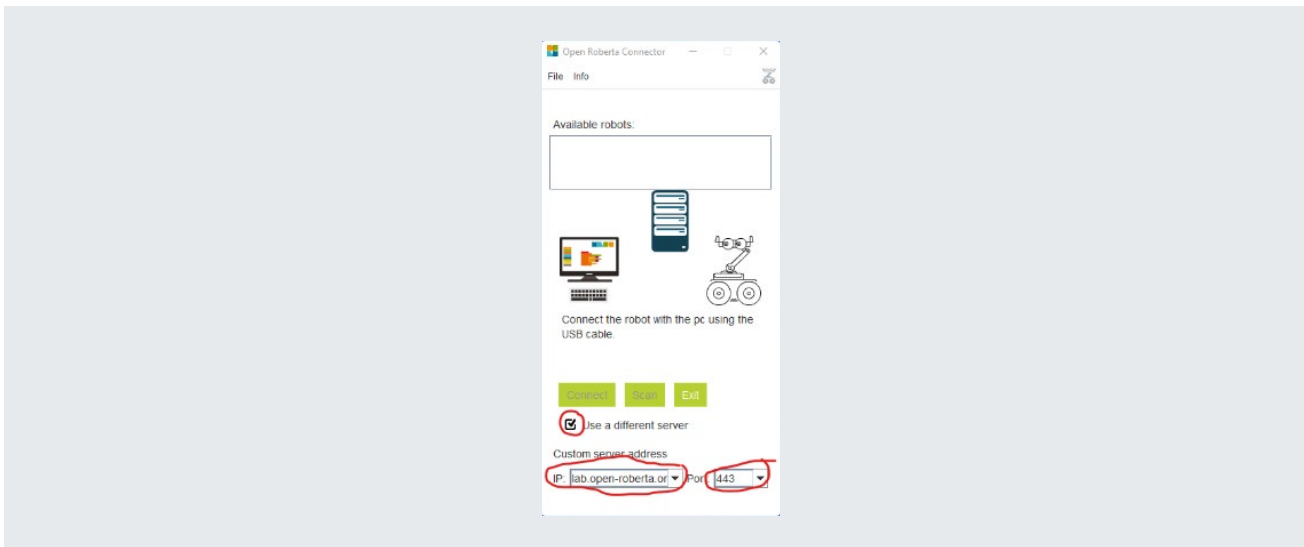


GitHub



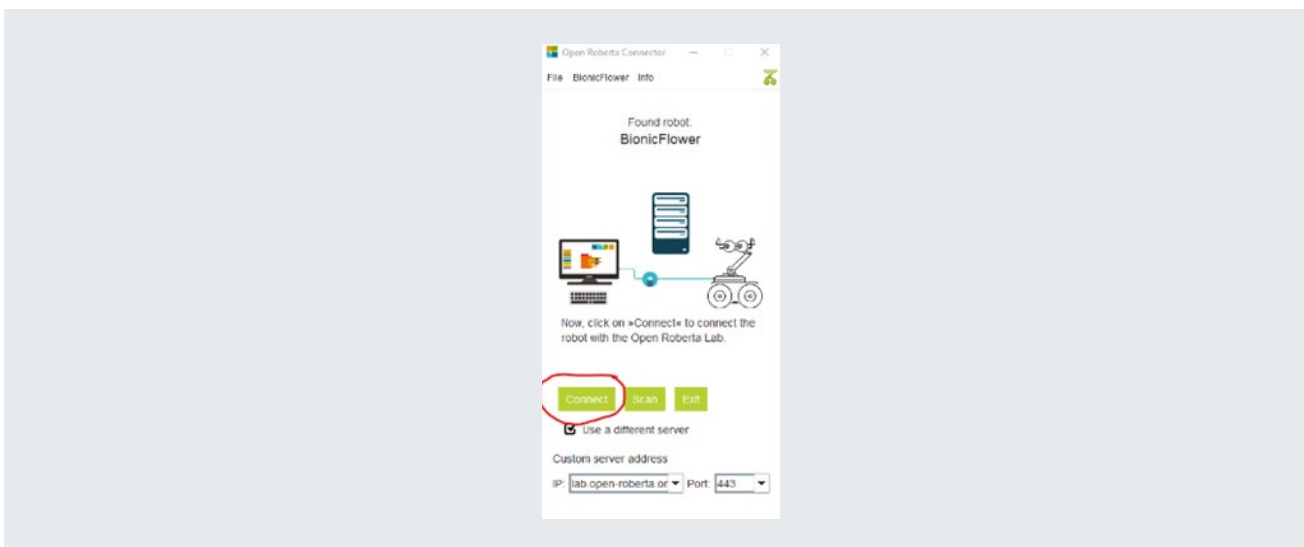
Step 2: Setup Open Roberta Connector

- Open the Roberta Connector.
- Select the box to use a different server.
- Enter the following address for the IP address: lab.open-roberta.org and for the number of the port: 443

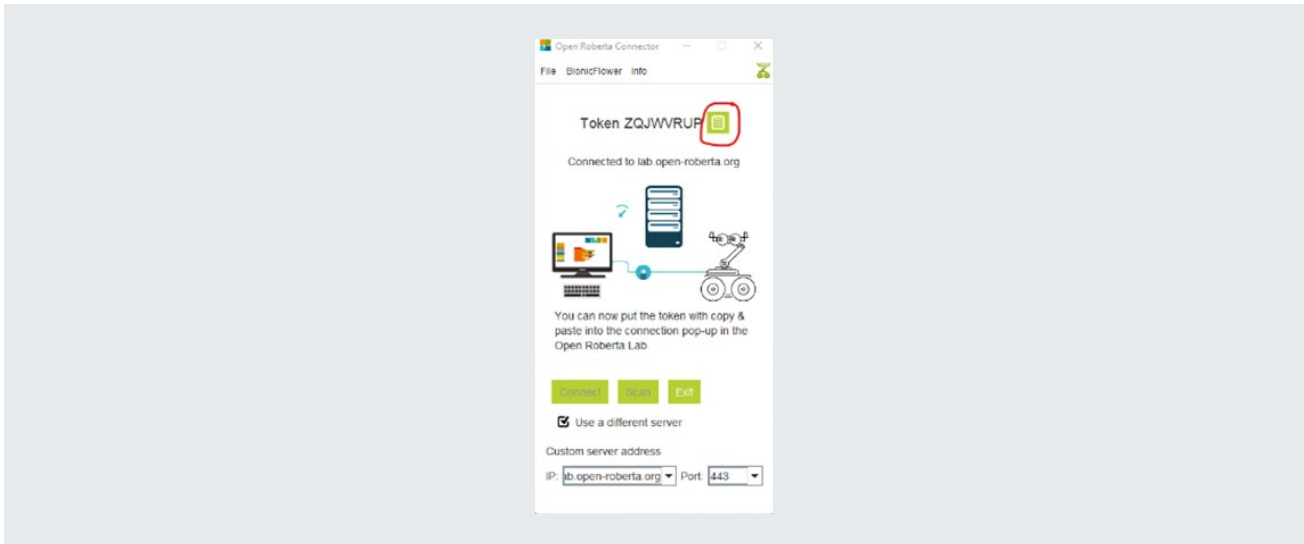


Step 3: Connect the Bionic Flower

- Connect the Bionic Flower to our computer with the USB cable
- Click on the “Connect” button to connect the Bionic Flower

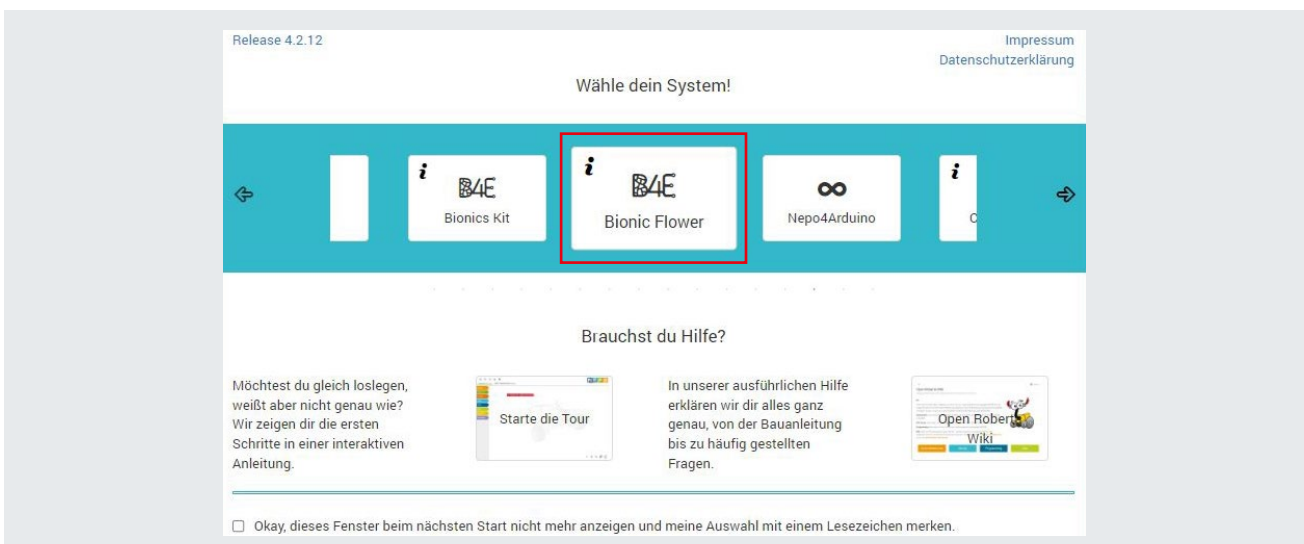


- Copy the code for the BionicFlower

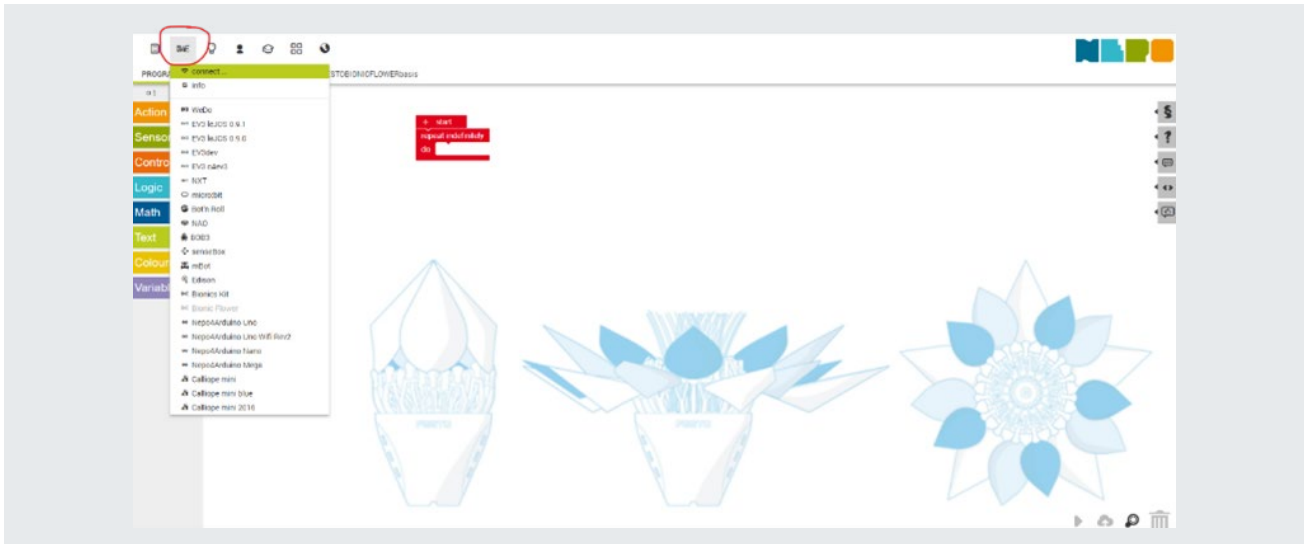


Step 4: Setup the environment of the Open Roberta lab

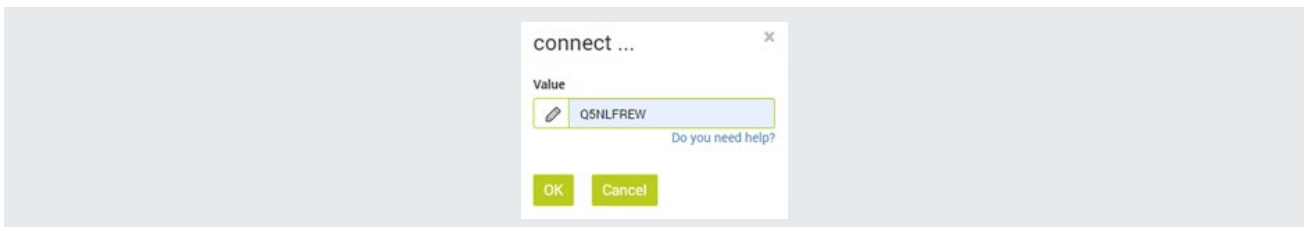
- Go to: <https://lab.open-roberta.org/>
- Select the BionicFlower in the menu



- Go to the B4E menu and click to connect the BionicFlower

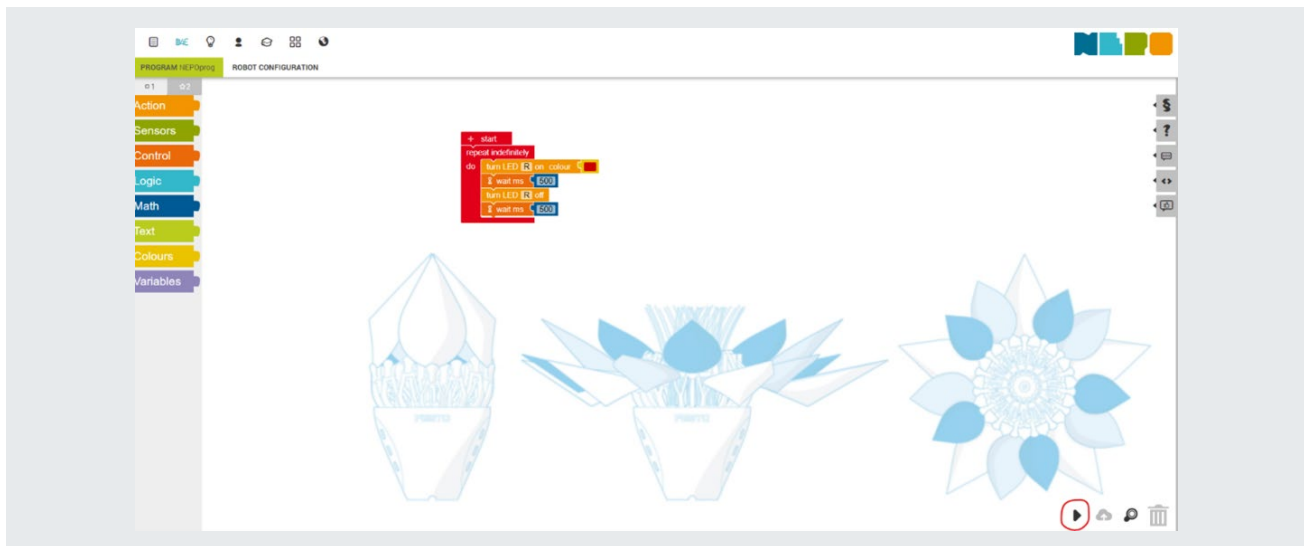


- Paste the code to connect the Bionic Flower and click on “Ok” butto



Step 5: Upload a code to the Bionic Flower

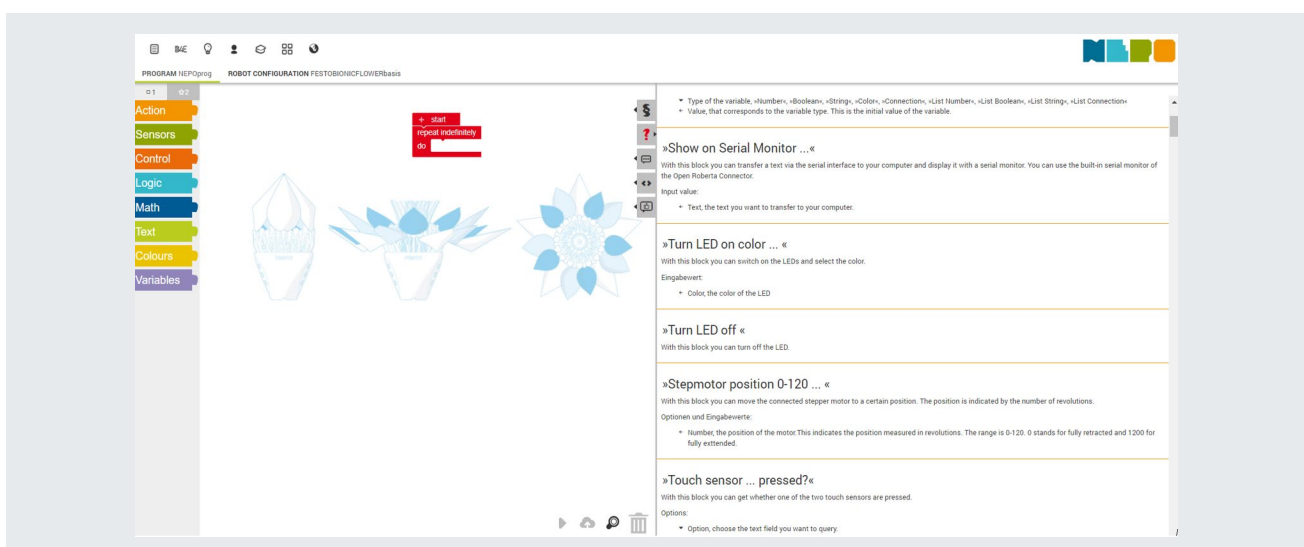
- Click on arrow at the right bottom



The B4E logo blink to indicate that the code is uploading on the Bionic Flower

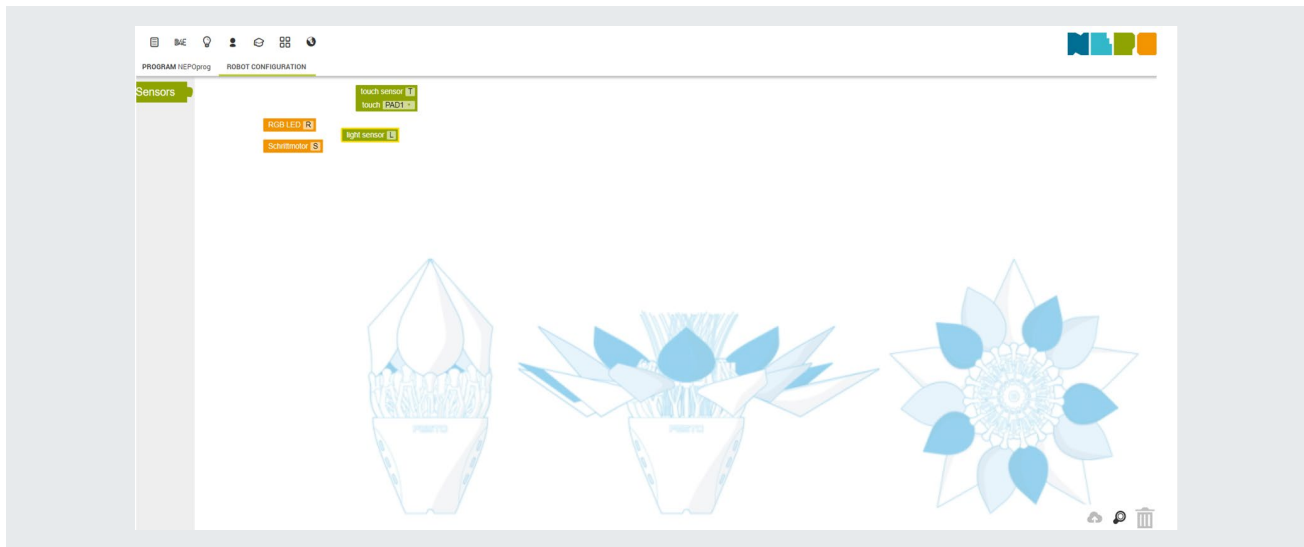
Support:

If you need further advice, please click on the “question mark” – there you will find additional information e.g. stepper motor position.



RobotConfiguration:

To use the sensors and other components, they must be dragged into the „Robot Configuration“ tab. Please always select only those that you really use.

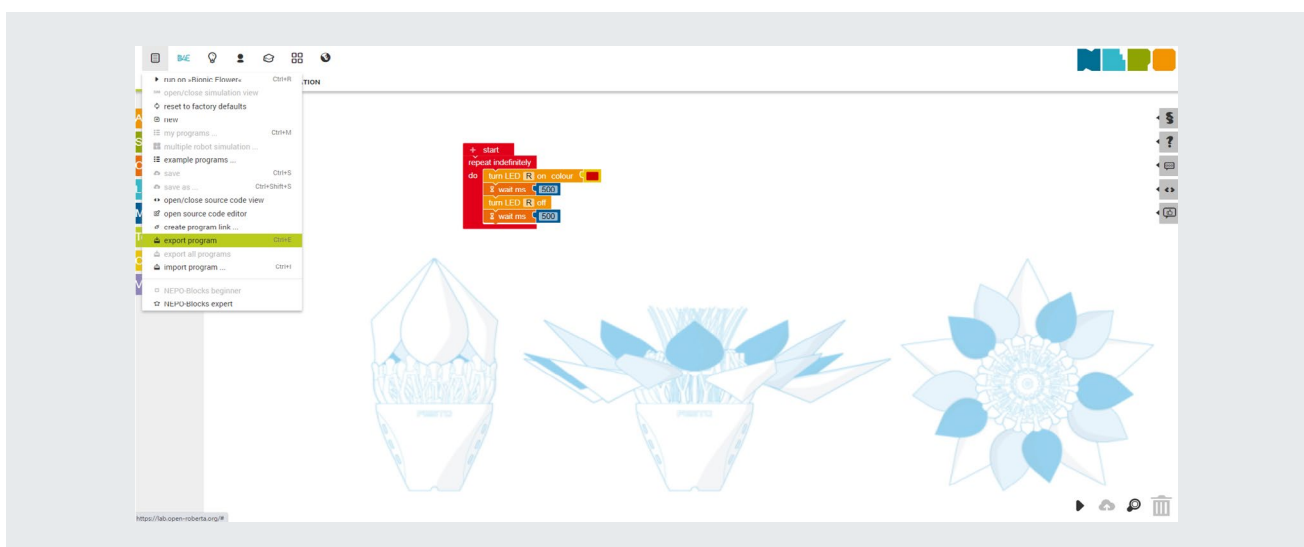


Import or export a code:

It is not possible to record a code. For this you need to export it and after import it to work again with.

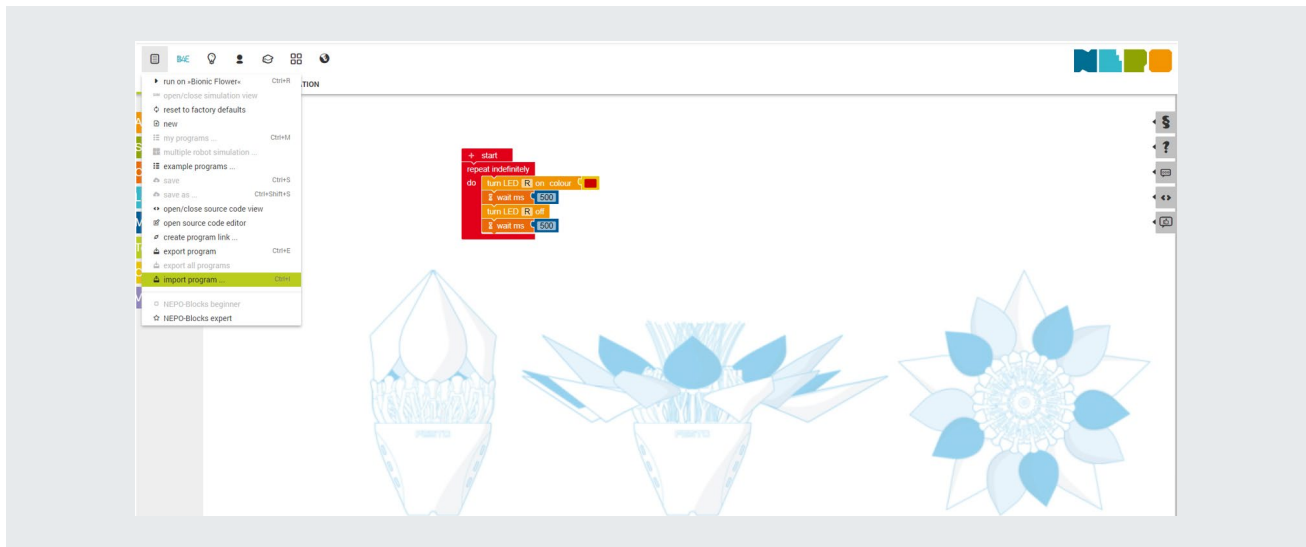
Export a code:

- Go to the first menu, and click on the export program
- A file with format .xml is created on your download folder.



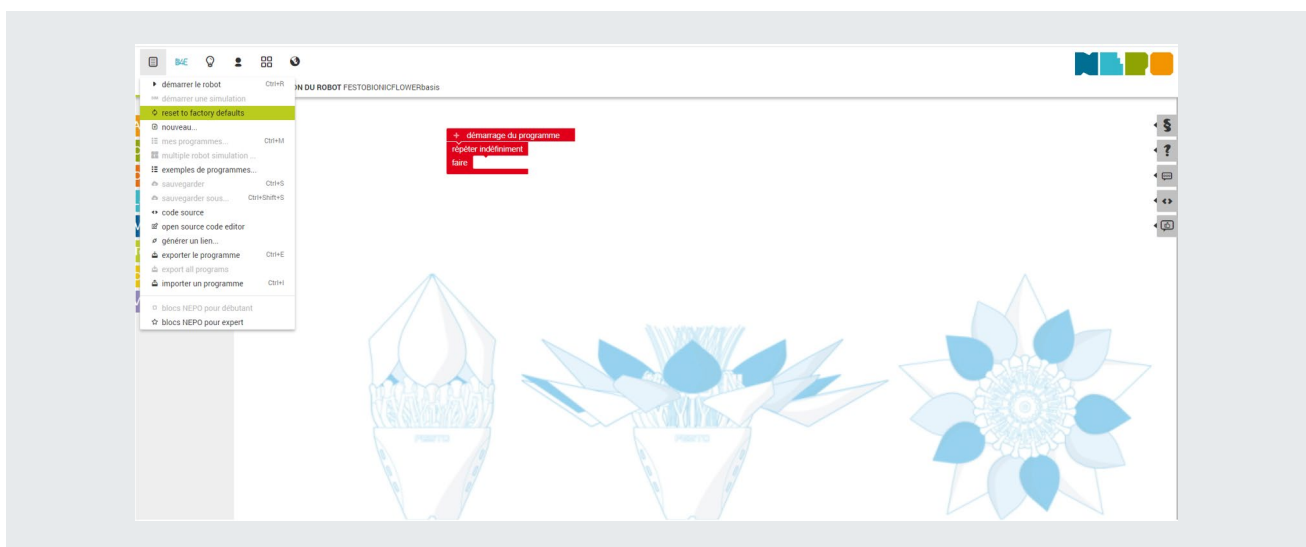
Import a code:

- Go to the first menu, and click on the import program
- Your code appears on the Open Roberta interface.



Reset the code for the Bionic Flower:

If you want to reset the Bionic Flower with the initial code, go to the first menu and click on the “reset to factory defaults”.



Exit:

Before exit Open Roberta, think to import your code if you want to use it for the next time. To exit the Open Roberta, on the Open Roberta Connector disconnect the Flower and disconnect your flower to your computer.

